

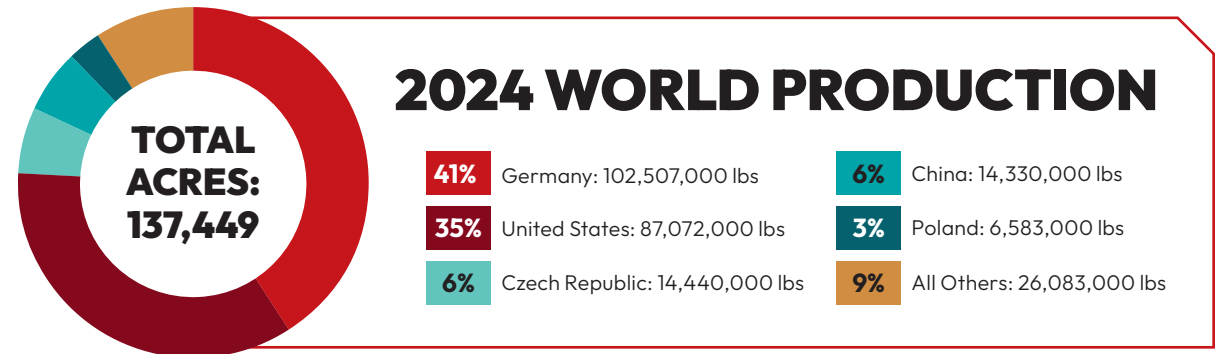




INDUSTRY INSIGHTS

Explore Notable Trends From the U.S. Hop Sector

- Top Pacific NW Varieties 4-5
- Acreage & Production 6-7
- Hop Highlights 9-11
- Aroma vs Alpha 12-13
- Harvested Acreage..... 14-15



Source: IHGC Economic Commission November 2020-2024 reports. US hop acreage is updated to reflect the USDA-NASS 2023 National Hop Report.

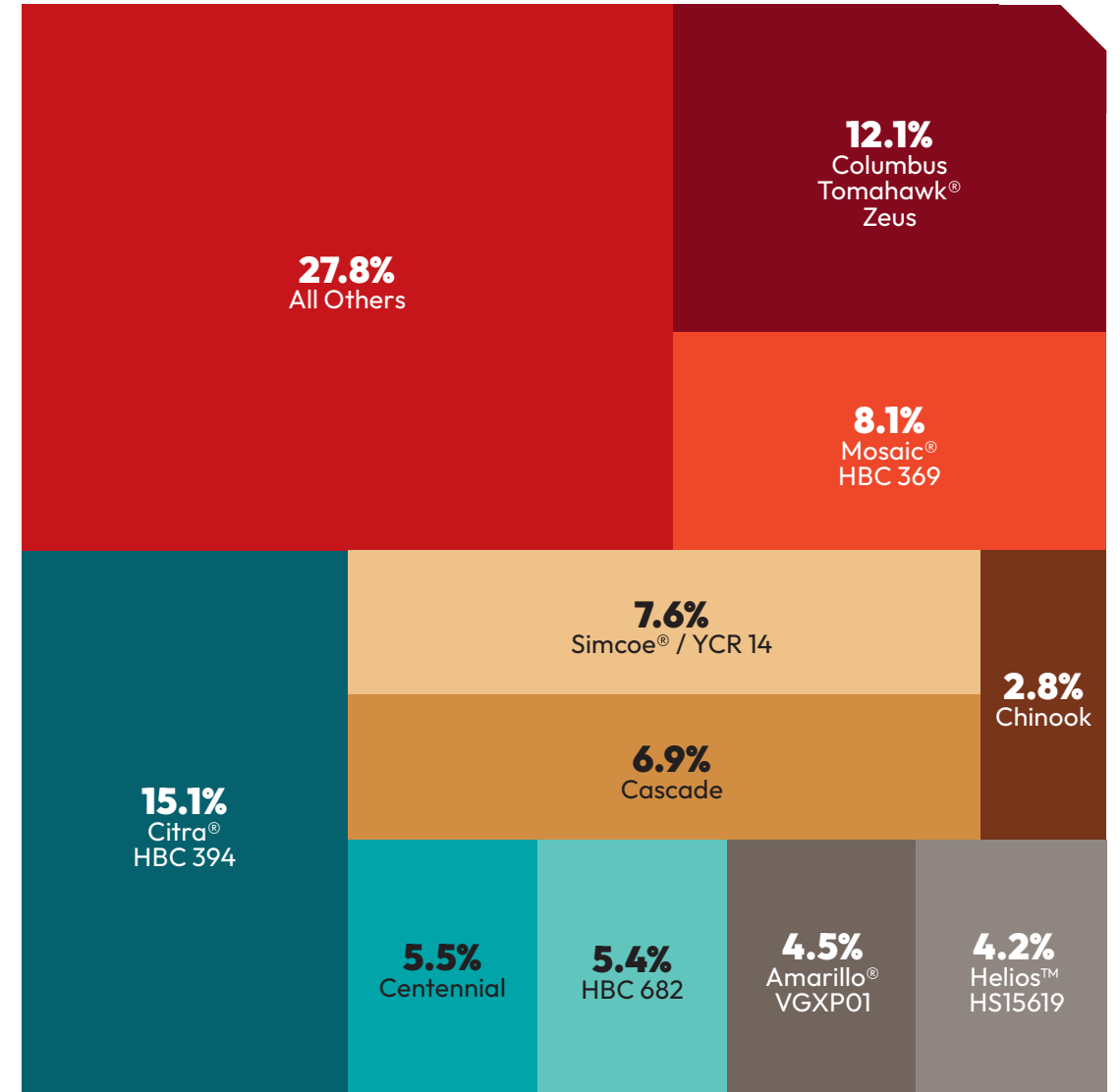


Want to geek out on more stats?

TOP PNW VARIETIES

These make up over 72% of U.S. Hops.

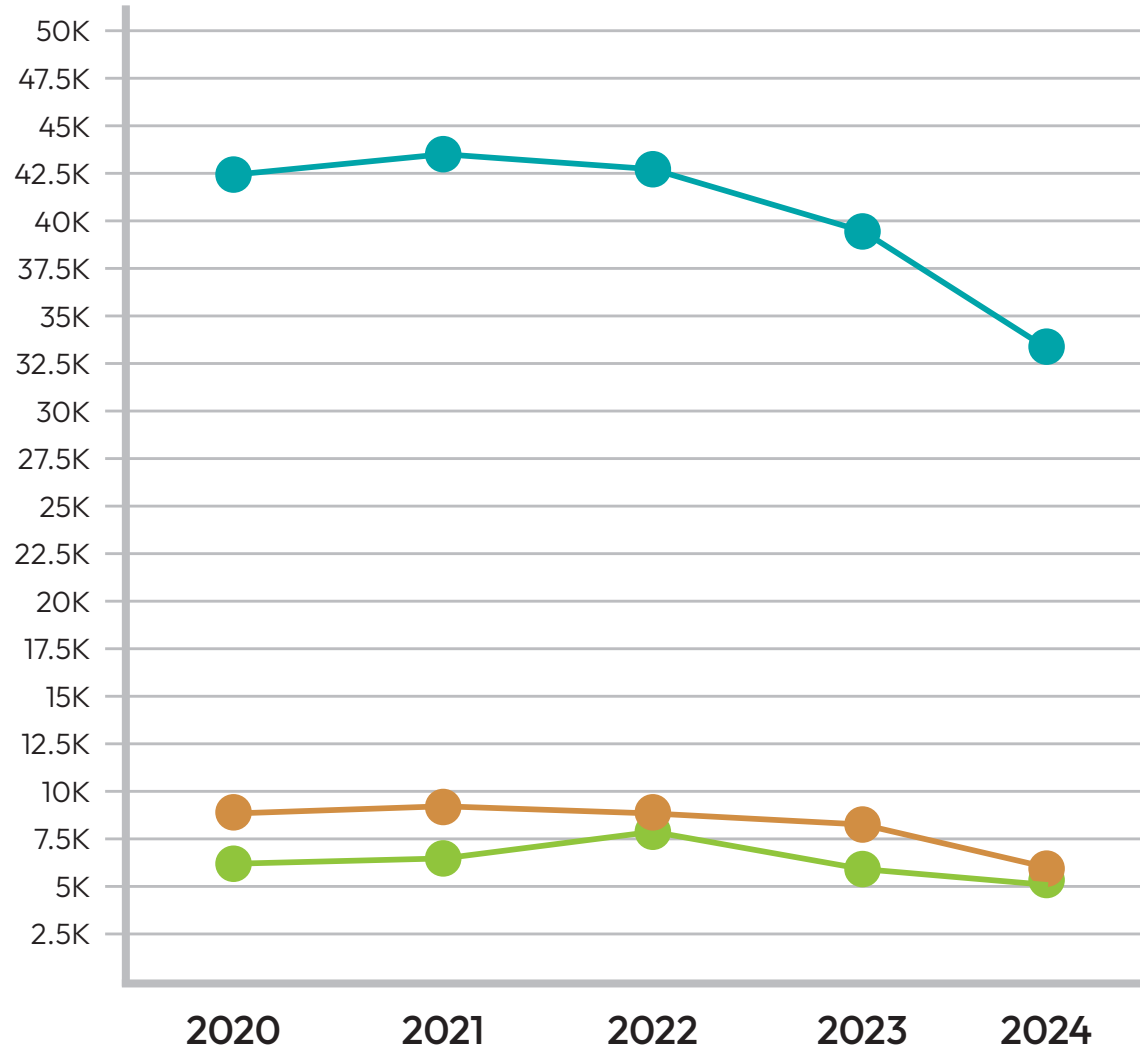
VARIETY	ALPHA	BETA	AROMA
AMARILLO® VGXP01	8.0 - 11.0 %	6.0 - 7.0 %	BLACK TEA, LEMON, PEACH, MELON, APRICOT, GRAPEFRUIT
CASCADE	4.5 - 7.0 %	4.8 - 7.0 %	FLORAL, SPICY, CITRUS, GRAPEFRUIT
CENTENNIAL	9.5 - 11.5 %	3.5 - 4.5 %	MEDIUM INTENSE, FLORAL, CITRUS
CHINOOK	12.0 - 14.0 %	3.0 - 4.0 %	MEDIUM INTENSE, SPICY, PINE, GRAPEFRUIT
CITRA® HBC 394	11.0 - 13.0 %	3.5 - 4.5 %	STRONG CITRUS, TROPICAL FRUIT
COLUMBUS TOMAHAWK® / ZEUS	14.5 - 17.0 %	4.0 - 6.0 %	BLACK PEPPER, PUNGENT, FENNEL, LICORICE, LIGHT CITRUS, CURRY, ONION
HBC 682	17.0 - 20.0 %	4.5 - 6.0 %	NEUTRAL BITTERING, HERBAL, EARTHY, FLORAL
HELIOS™ HS15619	17.0 - 20.0 %	4.5 - 6.0 %	RESINOUS, SPICY, HERBAL, AND FLORAL
MOSAIC® HBC 369	18.0 - 21.0 %	3.5 - 4.5 %	PEAR, GOOSEBERRY, MANDARIN, LIME, PEACH
SIMCOE® YCR 14	12.0 - 14.0 %	4.0 - 5.0 %	UNIQUE PINE-LIKE AROMA



For more comprehensive variety lists and data, check with merchants who do regular tests and analyses.

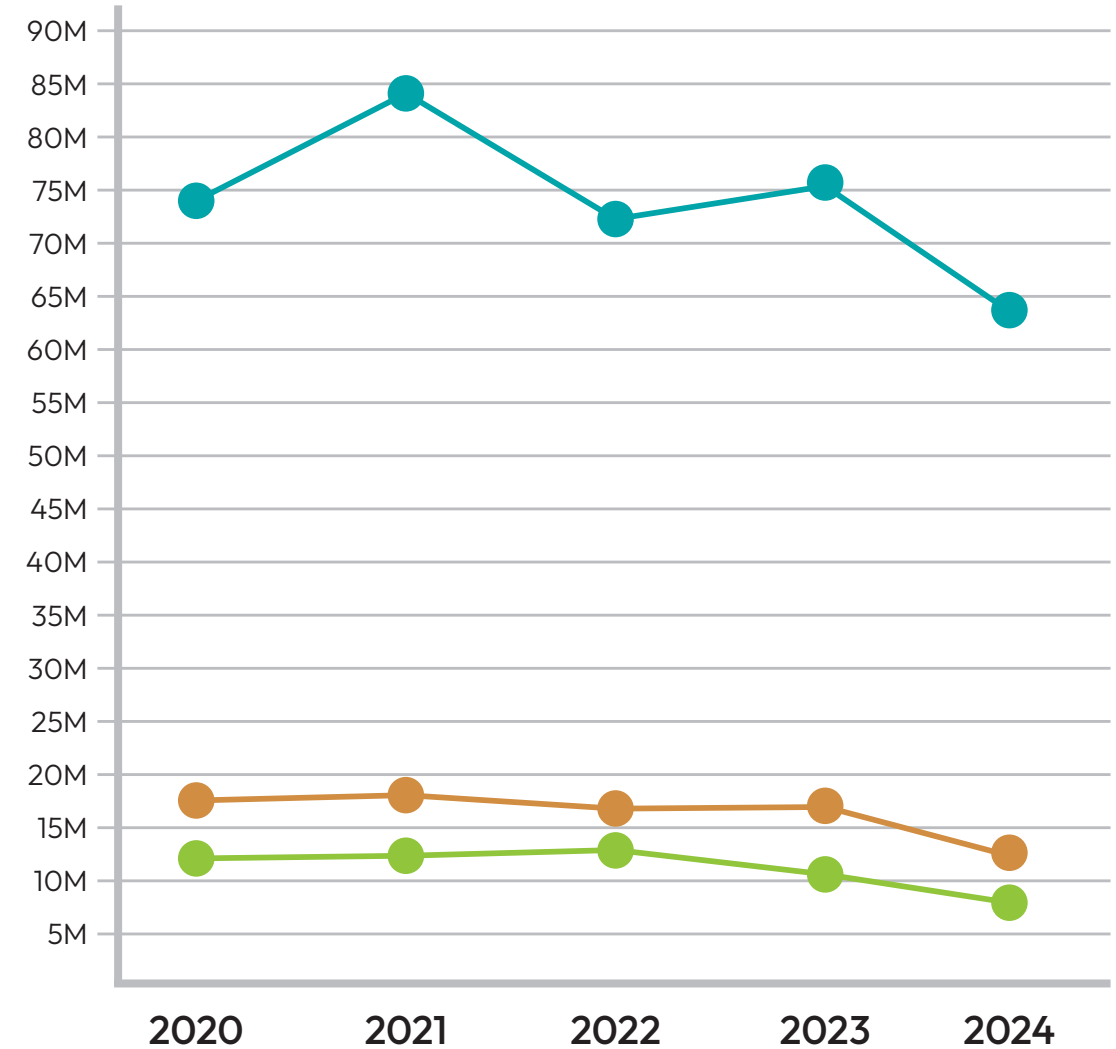
ACREAGE+PRODUCTION

Acreage (in acres)



 **Washington**  **Idaho**  **Oregon**

Production (in pounds)



 **Washington**  **Idaho**  **Oregon**

2025 HOP HIGHLIGHT



AMARILLO®

Developed by Virgil Gamache Farms, Amarillo® offers solid bittering properties and packs one of the highest myrcene oil contents of any hop. This gives it a very sweet citrus flavor closer to oranges than grapefruit.

ALPHA 8-11% OILS 1.5-1.9mL/100g

**CHARACTERISTICS:
CITRUS, SWEET FRUIT, FLORAL**



VISTA

Previously named USDA Elite Line 074, Vista is the newest variety to be released by the USDA public breeding program. Vista ranked highly on the hedonic score, and 7/10 on the potency scale, so it can excel in fruit-forward IPAs and Pale Ales. Brewers also said it would work well in lighter, more delicate styles like lagers and pilsners.

ALPHA 11-12% OILS 1.0-2.0mL/100g

**CHARACTERISTICS:
TROPICAL FRUIT, TANGERINE, MELON, PEAR,
GREEN TEA**

2025 HOP HIGHLIGHT



PINK

A new hop variety from Jackson Farms in Wilder, ID, Pink ID-158 brings a combination of citrus and stone fruit, with hints of honey, strawberry, and vanilla.

ALPHA 11-14% OILS 2.0mL/100g

**CHARACTERISTICS:
CITRUS, STONE FRUIT, HONEY, APPLE**



TANGIER

Tangier is a new and exciting hop from Segal Ranches. From one plant in 2021 to 25 acres in 2024, this hop is catching everyone's attention, leaving brewers and growers amazed by how well it transfers aromas and flavors into a recipe.

ALPHA 8.6% OILS 1.7mL/100g

**CHARACTERISTICS:
NAVEL ORANGE, TANGERINE, CITRUS**



HBC 1019

HBC 1019 c.v. is a new experimental hop variety from the Hop Breeding Company, a joint venture between John I. Haas and Yakima Chief Ranches. HBC 1019's aroma has been described as "a potent but pleasing mix of citrus, tropical, and stone fruits, with notes of coconut, Valencia oranges, caramelized bananas, peaches, and honeydew melon."

ALPHA 10-12% OILS 1.3-2.2mL/100g

**CHARACTERISTICS:
SWEET FRUIT, CREAM CARAMEL, CITRUS**



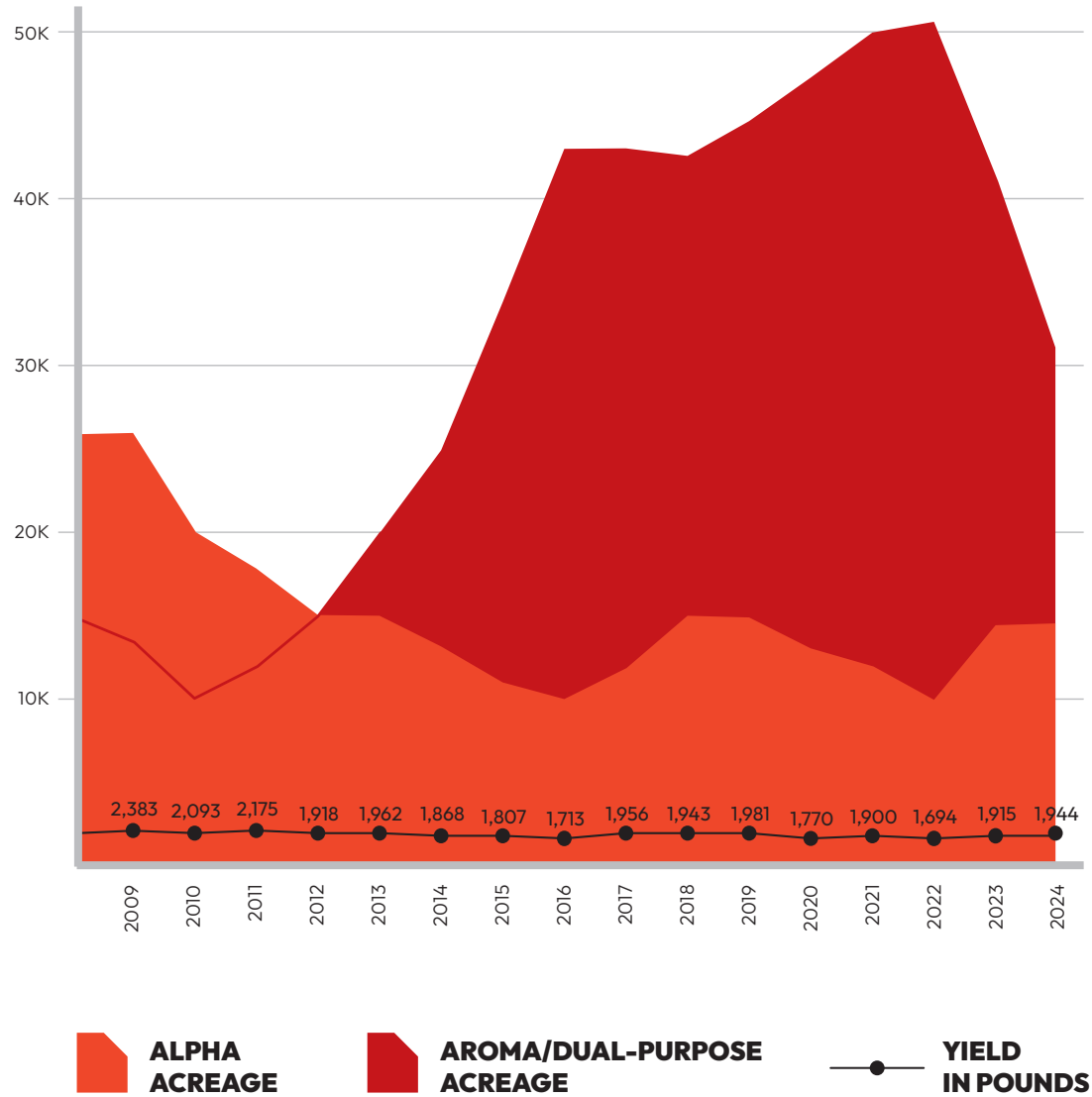
ELANI™

Elani™, previously known as YQH-1320, is a new hop variety from Yakima Quality Hops. Elani™ is a found variety Tim at YQH describes as "clean and bright, with intense tropical aromas."

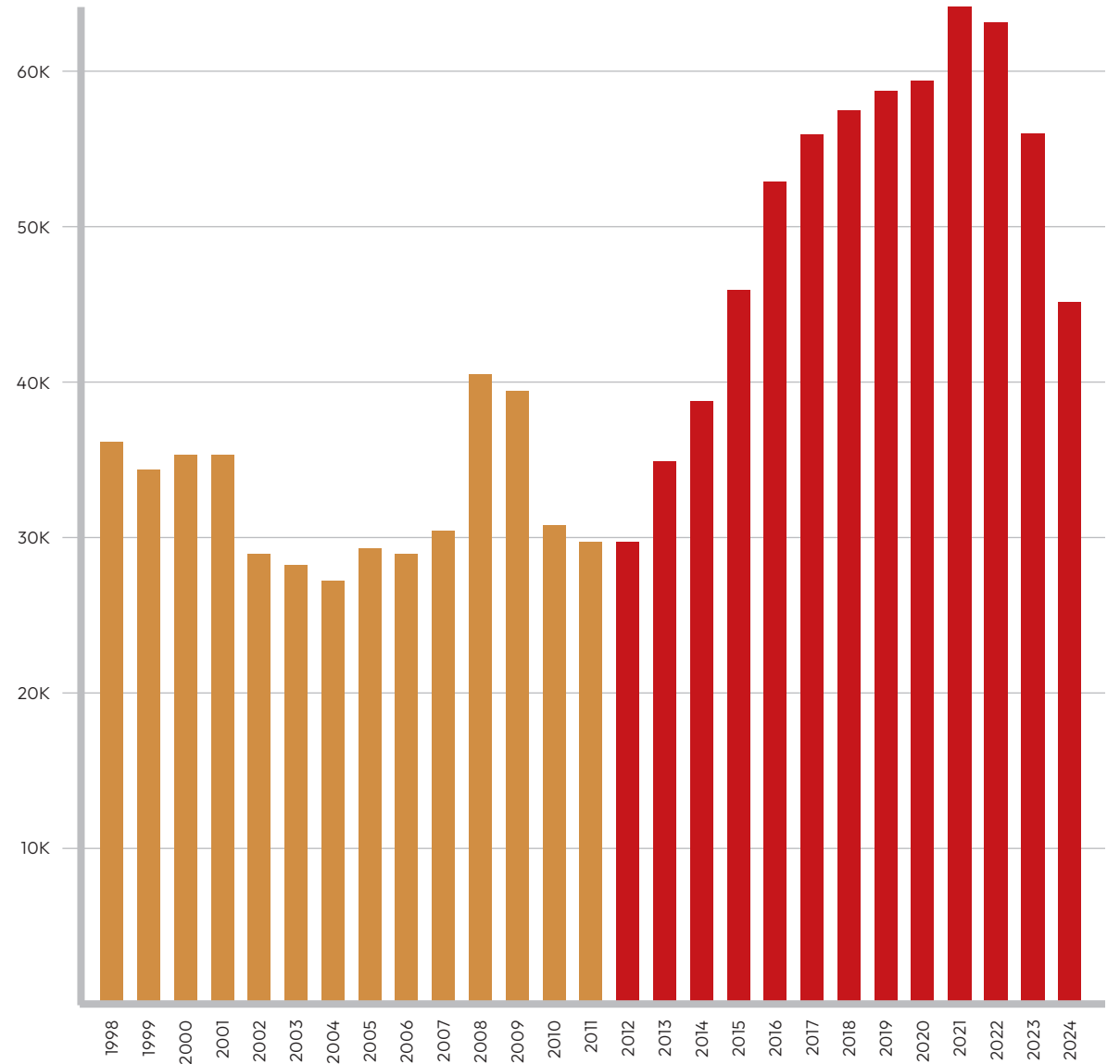
ALPHA 5.5-7.0% OILS 1.6-2.4mL/100g

**CHARACTERISTICS:
GUAVA, PINEAPPLE, PASSION FRUIT, MANGO,
PEACH, ORANGE ZEST**

U.S. AROMA vs ALPHA



U.S. HARVESTED ACRES





509-453-4749

info@usahops.org

usahops.org



This material is based upon work supported by the U.S. Department of Agriculture, Foreign Agricultural Service under Federal award No. MAP-2024-HGA. In accordance with Federal law and U.S. Department of Agriculture policy, this institution is prohibited from discriminating on the basis of race, color, national origin, gender, religion, age, disability, political beliefs, marital status, familial status, sexual orientation, or because of all or part of an individual's income is derived from any public assistance source. (Not all prohibited bases apply to all programs.) To file a complaint of discrimination, write USDA, Director, Office of Civil Rights, Room 326-W, Whitten Building, 1400 Independence Avenue, SW, Washington, DC 20250-9410 or call (202) 720-5964 (voice and TDD). USDA is an equal opportunity provider and employer.